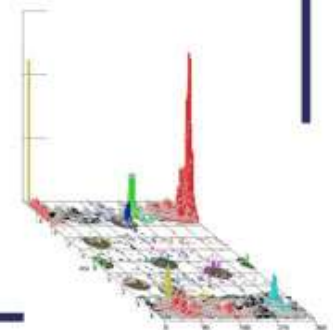


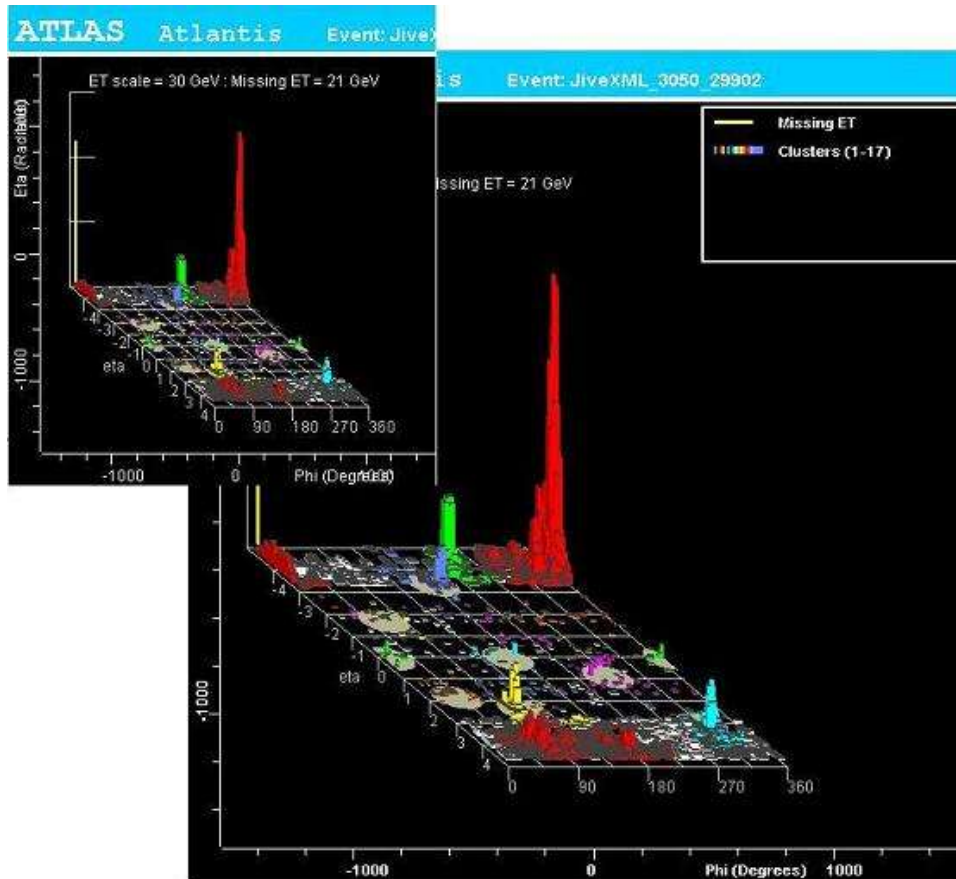
Lego Plot Changelog

An overview of changes made to the ATLAS Lego Plot feature since June 6, 2005

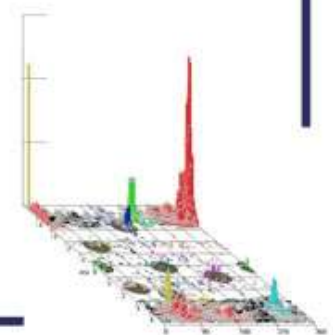
Joshua Auriemma



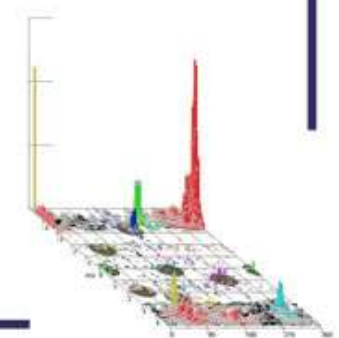
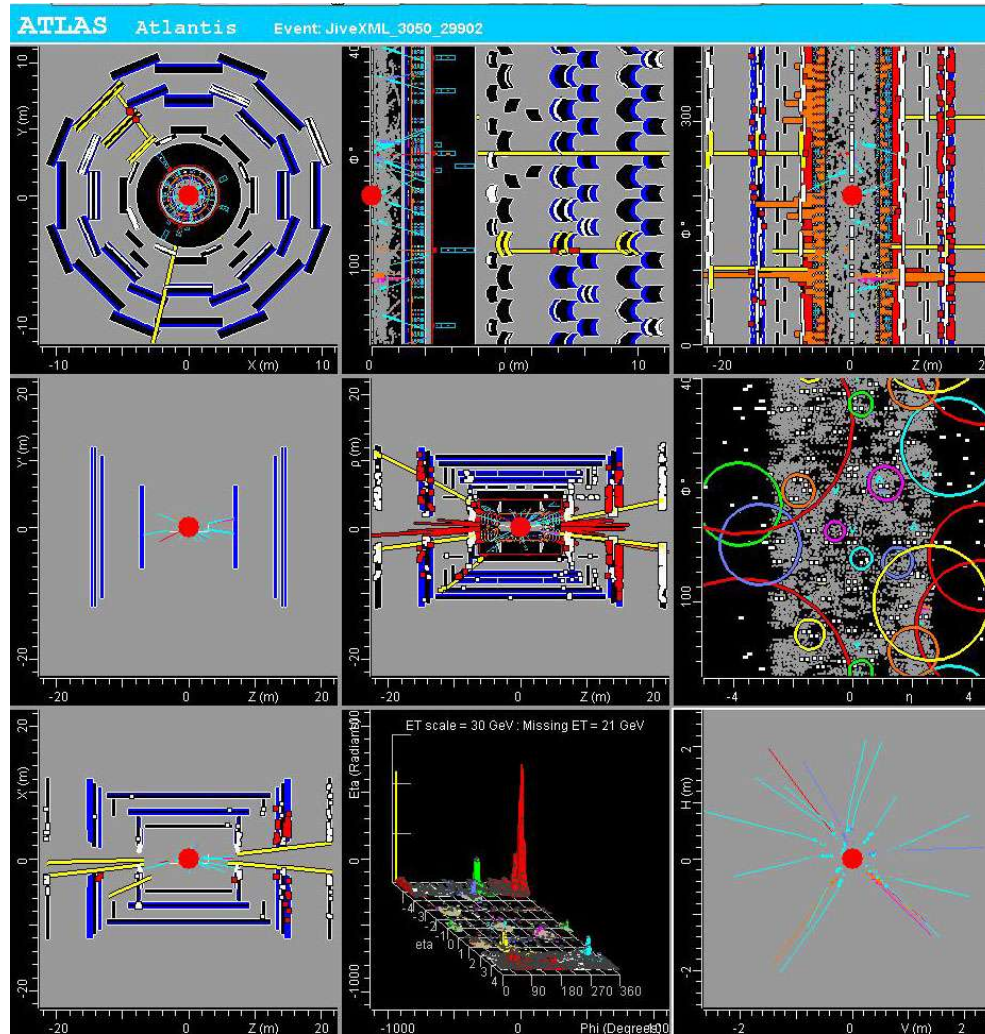
Scaling Feature



Auto-scaling is now implemented and fully-functional for any size (including the 3x3 split view)



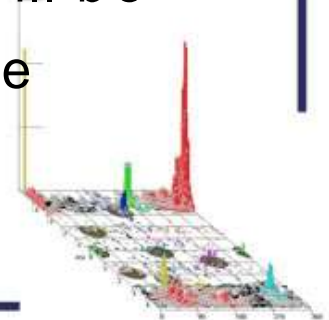
3x3 Scaling



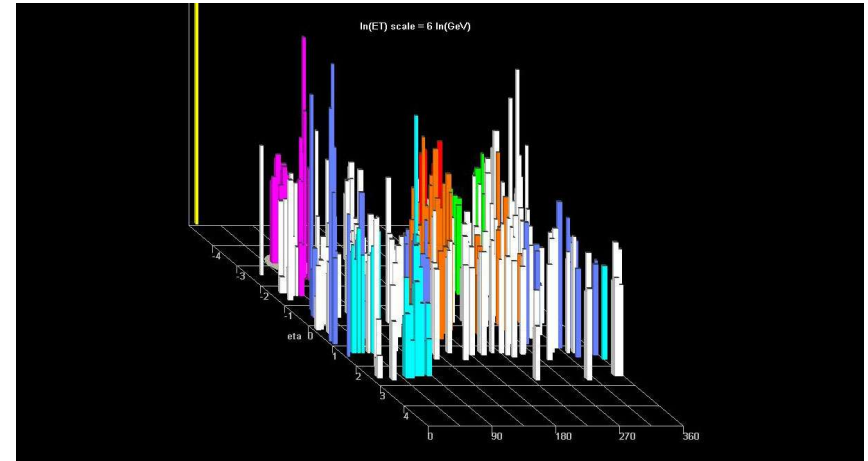
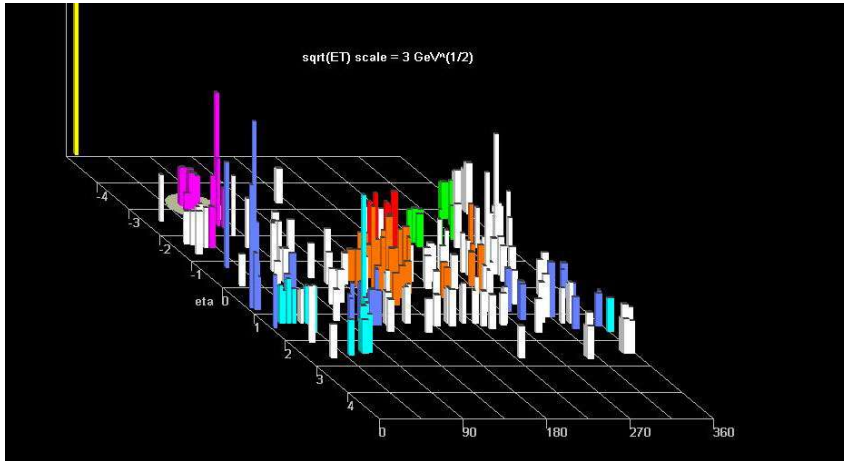
Legend



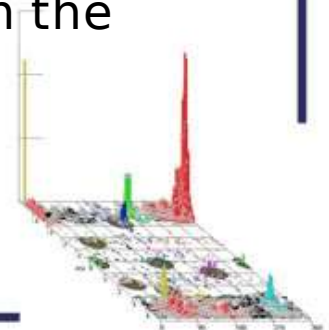
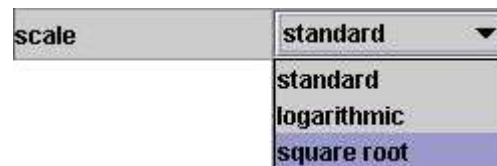
Above is a slightly modified image of the new legend. Currently, only Missing ET and Clusters are shown, but in the near future, the number of clusters will be correctly displayed, and a symbol for jets will be displayed as indicated above.



New Scale Features



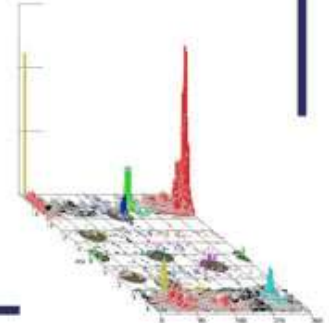
- Square root code has been corrected so that the square root scale may be used in conjunction with cluster coloring.
- A log scale feature has been added to the code
- These features have been reorganized as a combo box in the XML file.



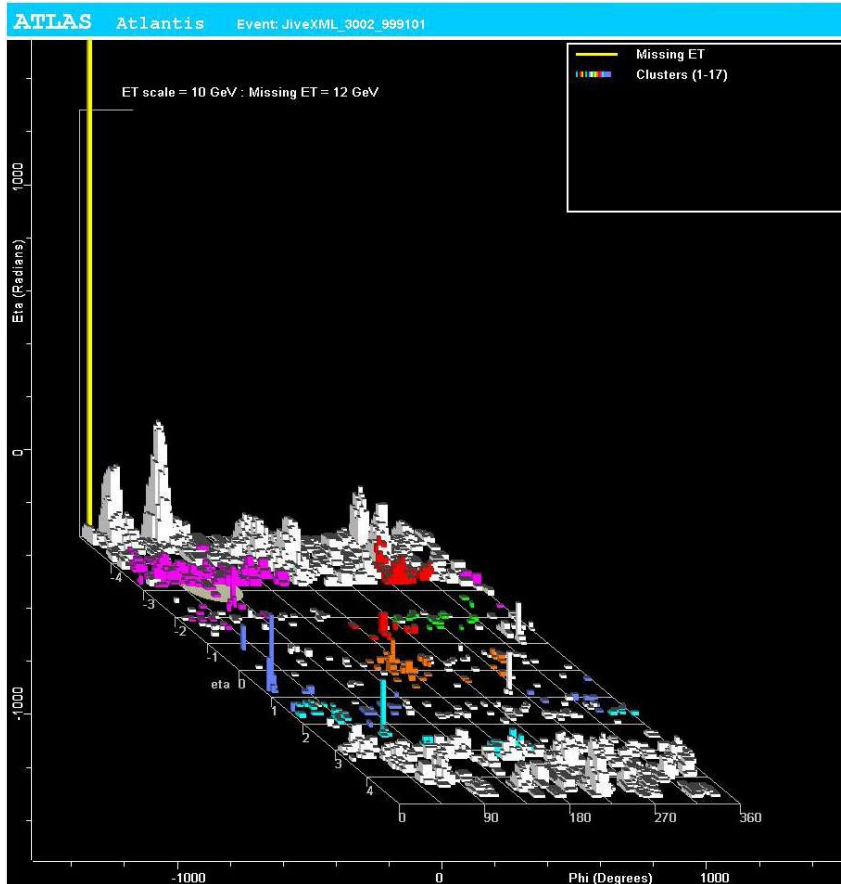
Cutting Eta/Phi Regions

<input type="checkbox"/> custom_eta	
min_eta	-5.0
max_eta	5.0
<input type="checkbox"/> custom_phi	
min_phi	0.0
max_phi	360.0

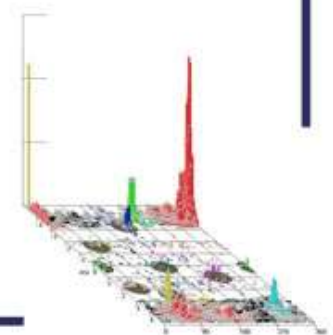
- XML file was edited and code is now in place to allow user-specification of eta and phi range restrictions.
- Defaults will be used if custom option boxes are not checked.



Coming Very Soon

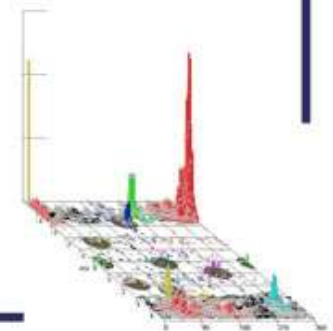


- A feature will soon be implemented whereby single clusters or layers may be individually selected and displayed.



Coming Very Soon – Part 2

- We are exploring the possibility of expanding the “reverse” feature to allow for 90° rotation.
- This new feature would replace the current “reverse” option with a combo box as seen on the right.



Checklist of Upcoming Changes

- Muons to be added
- Electron clusters?
- Someone looking at ROI?
- Jet cone radius changed to proper units
- Add timing information?
- Enable picking of jets

