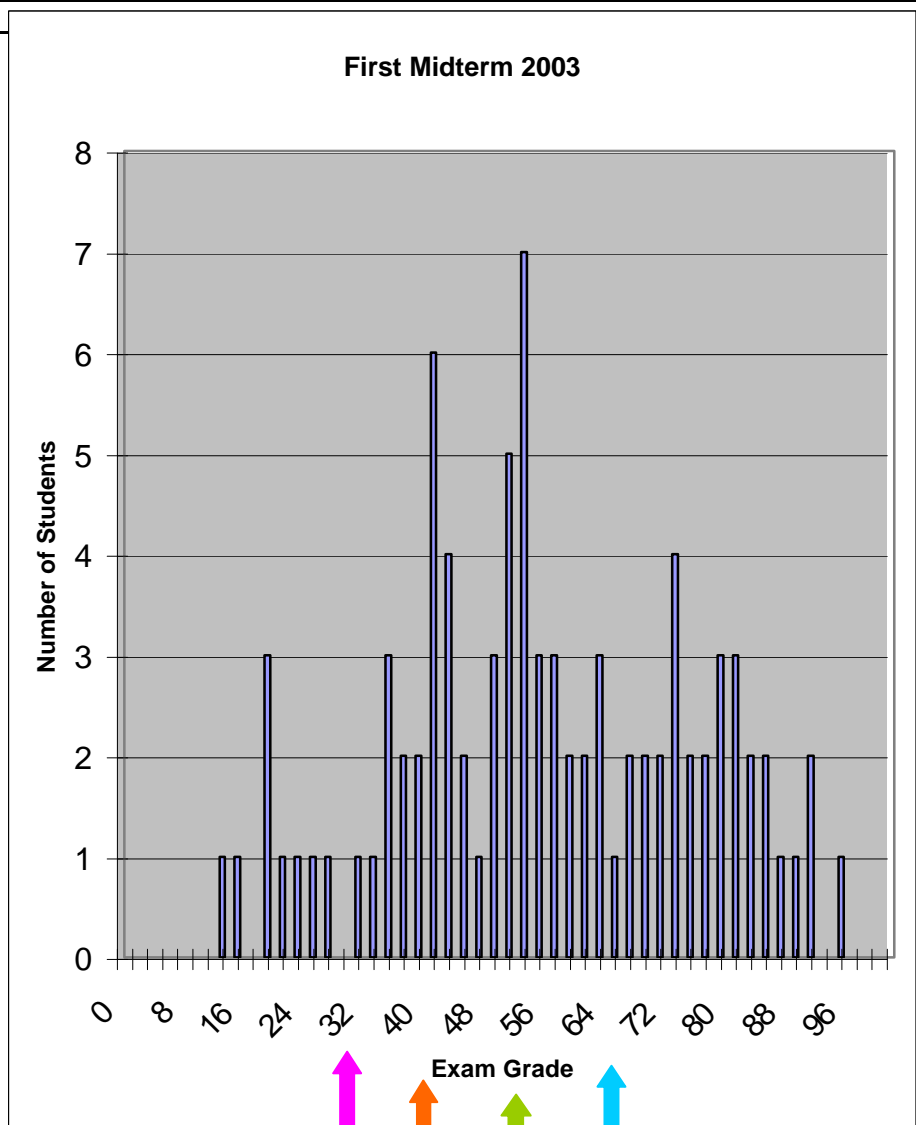


From	To	No.	Acc	Frac
	0	0	0	0.0%
1	2	0	0	0.0%
3	4	0	0	0.0%
5	6	0	0	0.0%
7	8	0	0	0.0%
9	10	0	0	0.0%
11	12	1	1	1.1%
13	14	1	2	2.2%
15	16	0	2	2.2%
17	18	3	5	5.6%
19	20	1	6	6.7%
21	22	1	7	7.9%
23	24	1	8	9.0%
25	26	1	9	10.1%
27	28	0	9	10.1%
29	30	1	10	11.2%
31	32	1	11	12.4%
33	34	3	14	15.7%
35	36	2	16	18.0%
37	38	2	18	20.2%
39	40	6	24	27.0%
41	42	4	28	31.5%
43	44	2	30	33.7%
45	46	1	31	34.8%
47	48	3	34	38.2%
49	50	5	39	43.8%
51	52	7	46	51.7%
53	54	3	49	55.1%
55	56	3	52	58.4%
57	58	2	54	60.7%
59	60	2	56	62.9%
61	62	3	59	66.3%
63	64	1	60	67.4%
65	66	2	62	69.7%
67	68	2	64	71.9%
69	70	2	66	74.2%
71	72	4	70	78.7%
73	74	2	72	80.9%
75	76	2	74	83.1%
77	78	3	77	86.5%
79	80	3	80	89.9%
81	82	2	82	92.1%
83	84	2	84	94.4%
85	86	1	85	95.5%
87	88	1	86	96.6%
89	90	2	88	98.9%
91	92	0	88	98.9%
93	94	1	89	100.0%
95	96	0	89	100.0%
97	98	0	89	100.0%



	1	2	3	Total
COUNT	89	89	89	89
AVERAGE	20.4	17.5	16.0	53.9
MEDIAN	23	16	15	52
MINIMUM	0	7	0	12
MAXIMUM	30	35	35	94
RMS	9.8	6.7	9.6	19.9

Note that this exam is only 20% of the total grade!
 If grades were assigned solely on the basis of this exam, they might look approximately as follows:

- <30 <=C +
- 30-40 B -
- 40-52 B
- 52-64 B +
- > 64 >= A -