

# Particle-Physics Computing and Analysis

Wed 31-May-2023

T0 = After lunch (1:30PM or when everyone's on Zoom)

- **T0:** Particle-physics computer resources at Nevis
- **T0 + 15 min:** ROOT - What is it? Why do we use it?
- **T0 + 30 min ▶ 4:30PM** - Hands-on ROOT study

Thu 01-Jun-2022

T1 = 9:30AM or when everyone's on Zoom

- **T1:** A physicist's guide to statistics jargon
- **T1 +  $\Delta T$  ▶ noon:** Hands-on ROOT study continues

# Particle-Physics Computing and Analysis

Thu 01-Jun-2022

T2 = After lunch (1:30PM or when folks are on Zoom)

- T2 = An introduction to batch systems
- T2 +  $\Delta T$  ► 4:30PM: Hands-on ROOT study continues

Fri 02-Jun-2022

T3 = 9:30AM

- I'll check my email regularly from 9:30->11:30 to see if anyone has signed onto my Zoom room. I'll sign in as soon as I see the notice.

# Who am I? (Systems administration)

Bill Seligman

**[seligman@nevis.columbia.edu](mailto:seligman@nevis.columbia.edu)**

Office phone: 1-914-591-2823 (but email is the best way to reach me)  
Room 116 (in non-pandemic eras)

Will cheerfully answer questions on:

Unix (& Mac) / security / software / networking

Will grumpily complain about questions on:

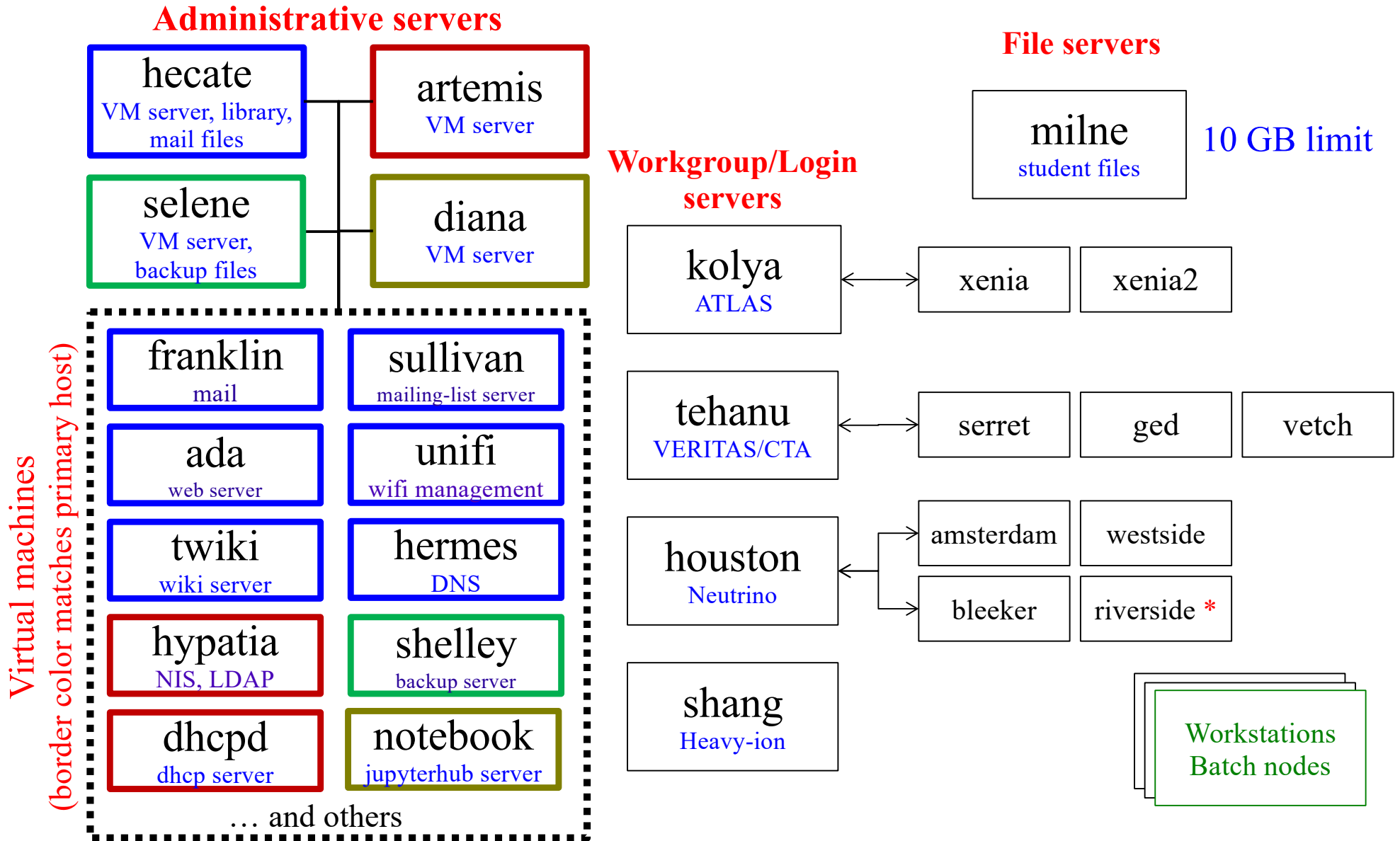
Windows / hardware

You can find more information about me (too much!) on my web site,  
which I'll leave for you to discover.

Nevis' social media: FB = Nevis Laboratories  
Instagram = nevislaboratories  
YouTube = *search for* #ScienceOnHudson

# Particle-Physics Computer Systems

## Linux Cluster



# Particle-Physics Computer Network

## VPN

The particle-physics network (including the research building and the electronics building) is protected by a firewall. Many of the computer systems (especially those associated with electronics design and testing) are inaccessible from the outside world without using VPN.

<https://twiki.nevis.columbia.edu/twiki/bin/view/Main/VPN>

Your supervisor will (hopefully) let you know if you have to use VPN for your work. This means installing Cisco AnyConnect on your laptop, which you can download from:

<https://vpn.nevis.columbia.edu>

Note that Nevis VPN is *not* set up for anonymous Internet access. They'll know who you are (for some arbitrary definition of *they*).

# Particle-Physics Computer Systems

## Printers

**bw-research:** Black and white, high-speed, duplex  
Location: near building entrance

**color-research:** Color, duplex  
Location: near building entrance

**bw-elec &  
bw-design:** Black and white, high-speed  
Location: electronics building

### Typical printer commands:

To print black and white on plain paper:  
`lpr -Pbw-research document.ps`

To print in color :  
`lpr -Pcolor-research filename`

For more information, see:

<https://twiki.nevis.columbia.edu/twiki/bin/view/Main/Printing>

# Particle-Physics Web Sites

Nevis Home Page:

<https://nevis.columbia.edu/>

Computing Pages (home->wiki):

<https://twiki.nevis.columbia.edu/twiki/bin/view/Nevis/Computing>

Linux Cluster Pages (home->wiki->computing):

<https://twiki.nevis.columbia.edu/twiki/bin/view/Nevis/LinuxCluster>

System News (home->wiki->computing):

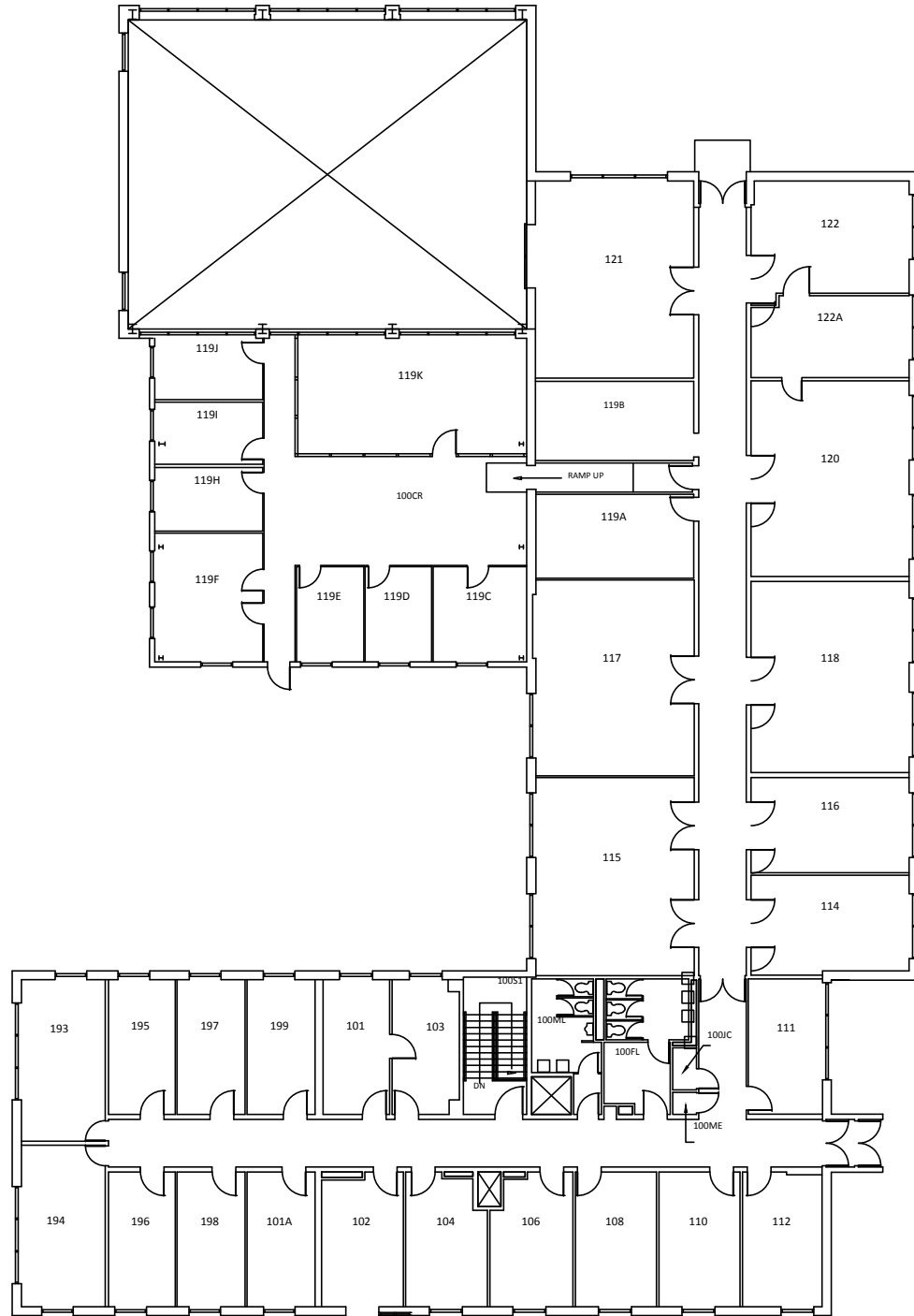
<https://listserv.nevis.columbia.edu/pipermail/nevis-linux/>

I try to keep these pages up-to-date. If there are problems, let me know -- but please be forgiving!

And now...

A waste of three  
minutes





RESEARCH BUILDING  
100 LEVEL